

University of Mumbai
Examination 2020 under cluster 4 (PCE)

Program: TE Information Technology
Curriculum Scheme: Rev2016
Examination: Third Year Semester V
Course Code: ITC 503 and Course Name: ADMT

Time: 1 hour

Max. Marks: 50

Note to the students:- All the Questions are compulsory and carry equal marks .

Q1.	In a _____ the system scans each file block and tests all records to see whether they satisfy the selection condition
Option A:	Index Search
Option B:	Linear search
Option C:	File scan
Option D:	Access paths
Q2.	Several relational algebra operations can be grouped together into a
Option A:	Pipeline
Option B:	Sector
Option C:	Track
Option D:	Segment
Q3.	Which of the following systems is responsible for ensuring durability
Option A:	Atomic system
Option B:	Recovery system
Option C:	Concurrency control system
Option D:	Compiler system
Q4.	In Concurrent Execution increased processor and disk utilization, leading to better transaction
Option A:	Bandwidth
Option B:	throughput
Option C:	Speed
Option D:	Execution
Q5.	If a query is optimized without providing specific values for its parameters the technique is called
Option A:	Complex query handling
Option B:	Multi query optimization
Option C:	Complex query optimization
Option D:	Parametric query optimization
Q6.	Which of the following protocols ensures conflict serializability and safety from deadlocks
Option A:	Two-phase locking protocol
Option B:	Time-stamp ordering protocol
Option C:	Graph based protocol

University of Mumbai
Examination 2020 under cluster 4 (PCE)

Option D:	Two-phase commit protocol
Q7.	In _____ Systems updated page is written back to the same disk location from which it was read
Option A:	Top Logging
Option B:	Left Ahead Logging
Option C:	Write Ahead Logging
Option D:	Bottom Logging
Q8.	_____ which is an alternative to log-based recovery; this scheme is useful if transactions execute serially
Option A:	Checkpoints
Option B:	Distributed Transactions
Option C:	Shadow Paging
Option D:	Recovery algorithm
Q9.	Which of the following does authentication aim to accomplish
Option A:	Determine if the user is an attacker
Option B:	Restrict what operations/data the user can access
Option C:	Determine who the user is
Option D:	Flag the user if he/she misbehaves
Q10.	GIS stands for
Option A:	Generic Information System
Option B:	Geographic Information System
Option C:	Geological Information System
Option D:	Geographic Information Sharing
Q11.	'Spatial databases' are also known as
Option A:	Geodatabases
Option B:	Monodatabases
Option C:	Concurrent databases
Option D:	temporal databases
Q12.	A (geographic) field is a geographic phenomenon for which, for every point in the study area
Option A:	A value cannot be determined
Option B:	A value can be determined
Option C:	A value is not relevant
Option D:	A value is missing
Q13.	Prevention of access to database by unauthorized users is referred as
Option A:	integrity
Option B:	productivity
Option C:	reliability
Option D:	security
Q14.	Some of the columns of a relation are at different sites is which of the following

University of Mumbai
Examination 2020 under cluster 4 (PCE)

Option A:	Data Replication
Option B:	Horizontal Partitioning
Option C:	Vertical Partitioning
Option D:	Horizontal and Vertical Partitioning
Q15.	A distributed database can use which of the following strategies
Option A:	Totally centralized at one location and accessed by many sites
Option B:	Partially or totally replicated across sites
Option C:	Partitioned into segments at different sites
Option D:	All of the above
Q16. systems typically allows to replace failed disks without stopping access to the system
Option A:	RAM
Option B:	RMAN
Option C:	RAD
Option D:	. RAID
Q17.	A sequence of primitive operations that can be used to evaluate a query are called as
Option A:	Query evaluation plan
Option B:	Query evaluation algebra
Option C:	Query evaluation primitive
Option D:	Query evaluation engine
Q18.	The lowest level operator to access data in query processing is
Option A:	File scan
Option B:	File manipulation
Option C:	File handling
Option D:	File organization
Q19.	Data transformation includes which of the following
Option A:	Separating data from one source into various sources of data
Option B:	A process to change data from a summary level to a detailed level
Option C:	Joining data from one source into various sources of data
Option D:	A process to change data from a detailed level to a summary level
Q20.	_____ is not associated with data cleaning process
Option A:	Domain consistency
Option B:	Deduplication
Option C:	Segmentation
Option D:	Disambiguation
Q21.	Which are the numeric measurements or values that represent a specific business aspect or activity
Option A:	Dimensions
Option B:	Facts
Option C:	Schemas

University of Mumbai
Examination 2020 under cluster 4 (PCE)

Option D:	Tables
Q22.	Data modeling technique used for data marts is
Option A:	Dimensional modeling
Option B:	ER – model
Option C:	Physical model
Option D:	Logical model
Q23.	The data is stored, retrieved and updated in
Option A:	DBMS
Option B:	OLAP
Option C:	OLTP
Option D:	MPP
Q24.	Logical data map is ____
Option A:	used to flag an entire file set that is ready for processing by the ETL process
Option B:	To identify which sources are going to with destination
Option C:	Data is pulled from multiple sources to be merged into one or more destination
Option D:	load to collect information
Q25.	Tools that you can easily use with ETL are ____
Option A:	SAS
Option B:	OLAP
Option C:	BI tools
Option D:	Oracle warehouse builder

University of Mumbai
Examination 2020 under cluster 4 (PCE)

Program: TE Information Technology

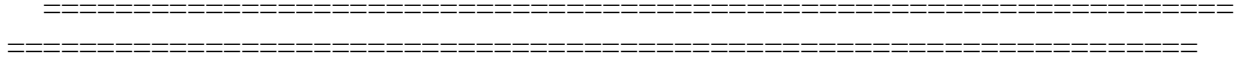
Curriculum Scheme: Rev2016

Examination: Third Year Semester V

Course Code: ITC 503 and Course Name: ADMT

Time: 1 hour

Max. Marks: 50



Question	Correct Option (Enter either 'A' or 'B' or 'C' or 'D')
Q1.	B
Q2.	A
Q3.	B
Q4	B
Q5	D
Q6	B
Q7	C
Q8.	C
Q9.	C
Q10.	B
Q11.	A
Q12.	B
Q13.	D
Q14.	C
Q15.	D
Q16.	D
Q17.	A
Q18.	A
Q19.	D
Q20.	C
Q21.	B
Q22.	A
Q23.	C
Q24.	B
Q25.	D

University of Mumbai
Examination 2020 under cluster 4 (PCE)